

SEALING COVER GA, GSA

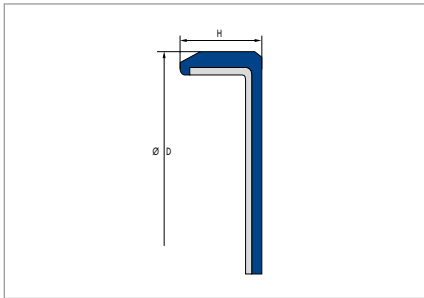


Fig. 1 Sealing Cover GA

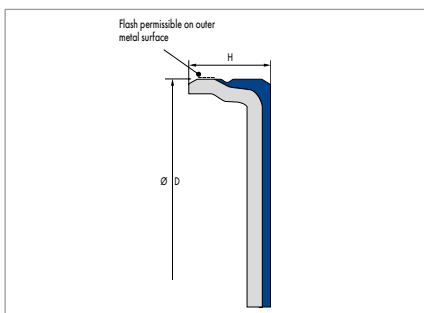


Fig. 2 Sealing Cover GSA

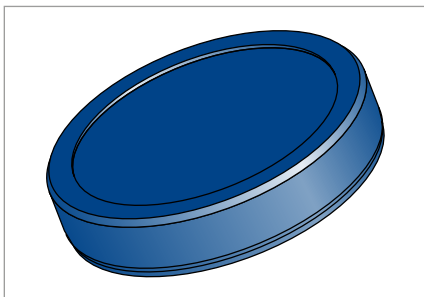


Fig. 3 Sealing Cover GA – Top view

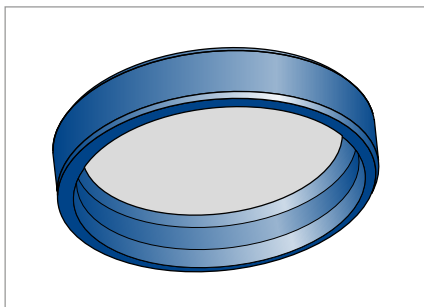


Fig. 4 Sealing Cover GA – Bottom view

PRODUCT DESCRIPTION

- GA (normal design, rubber outside): sealing cover with vulcanised metal inserts made of sheet steel
- GSA (special design, rubber/steel outside): sealing cover with vulcanised metal inserts made of sheet steel with metal seat (H8).

PRODUCT ADVANTAGES

- Secure sealing to the housing bore, even with increased roughness of the bore, higher thermal expansion and split housings
- Very stable construction
- Can be painted
- Variety of standard versions.

MATERIAL

Sealing cover for the static sealing of boreholes in housings with press fitting e.g. shaft pass through walls in gearbox housings.

MATERIAL

Acrylonitrile-butadiene rubber

| | |
|---------------------|---|
| Designation | 75 NBR 99004 |
| Colour | Black |
| Hardness | approx. 75 Shore A |
| Metal insert | unalloyed steel DIN EN 10139 (DIN 1624) |

Sealing covers made of other materials and in other dimensions available on enquiry.

OPERATING CONDITIONS

| | |
|--------------------|-------------------------|
| Media | All common mineral oils |
| Temperature | -40 ... +100 °C |

FITTING & INSTALLATION

Design of locating bore

| | |
|---------------------------|---|
| Tolerance | ISO H8 |
| Roughness type GA | $R_{\max} \leq 25 \mu\text{m}$ $R_a = 1,6 \dots 6,3 \mu\text{m}$ $R_z = 10 \dots 25 \mu\text{m}$ |
| Roughness type GSA | $R_{\max} \leq 16 \mu\text{m}$ $R_a = 0,8 \dots 3,2 \mu\text{m}$ $R_z = 6,3 \dots 16 \mu\text{m}$ |